

Daydream

when minds wander, designs unfold



Unleash creativity through calm with the Daydream tile collection.

Let your mind wander



This collection draws inspiration from the power of constructive daydreaming—a state of mind, scientifically proven to enhance innovation. Studies have confirmed that the brain’s positive response to natural fractal patterns, like those found in clouds, can be instinctively recognized after only 50 milliseconds of exposure providing immediate benefits to people with its calming effects.



Carbon
Neutral

Daydream

A collection where the serene fractal patterns of clouds meet the captivating colorways of the sky.

By bringing these instinctively soothing fractal designs into interior spaces, Daydream creates environments optimized for mental wandering, fostering a unique calm where great ideas flourish. The simple action of getting lost in thought might be all you need for your next big idea.



Neutrals

MATTE rectified



Mist



Drizzle



Fog



Storm

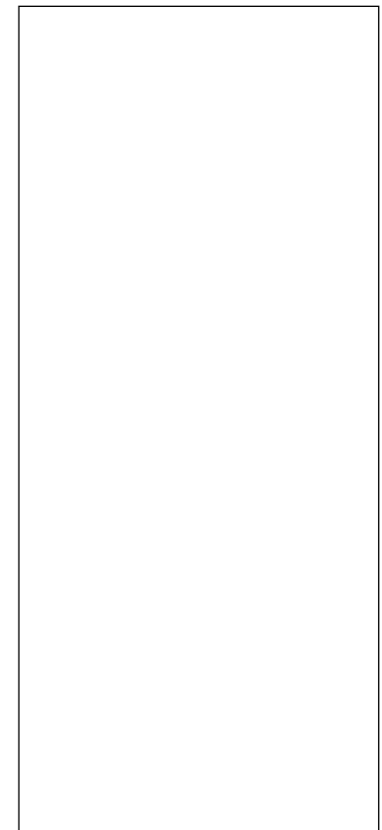
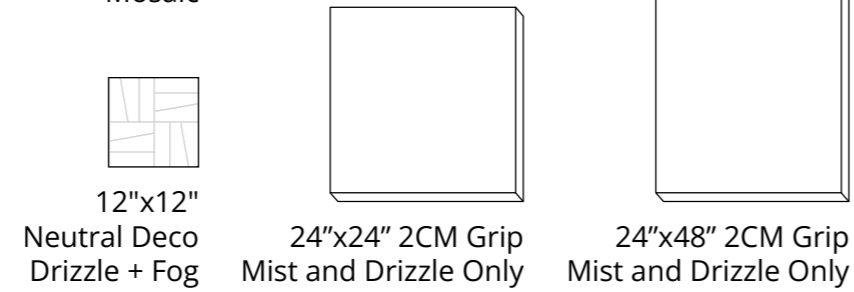
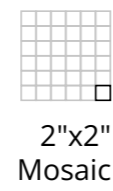
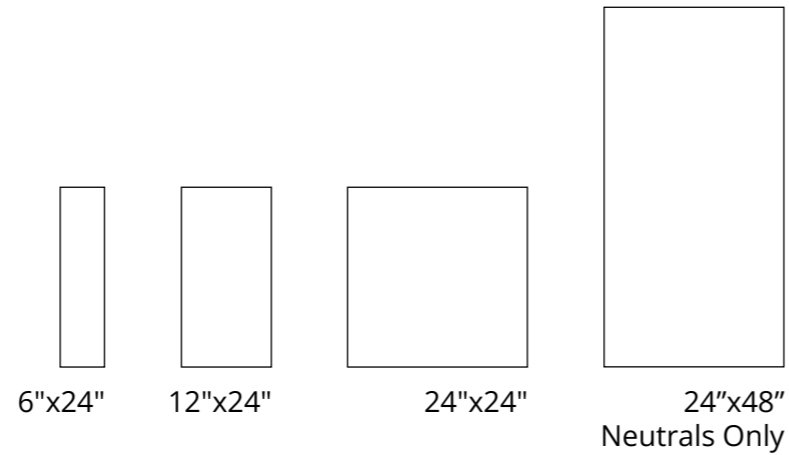


Neutral Deco



Downpour

MATTE rectified



48"x110"

Warm

MATTE rectified



Sunrise

MATTE rectified



Golden Hour



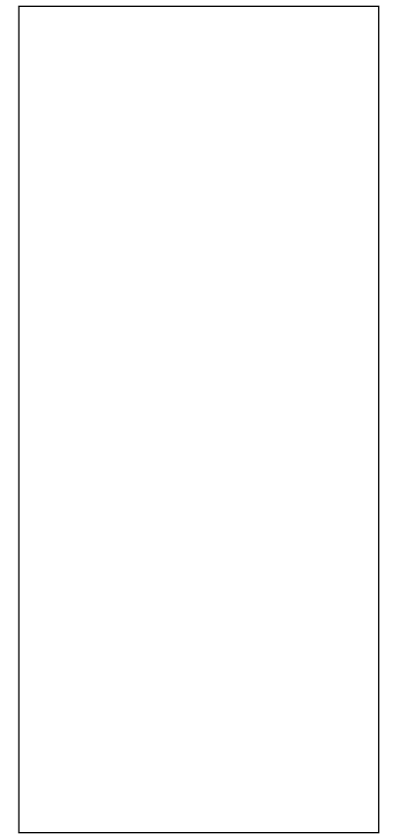
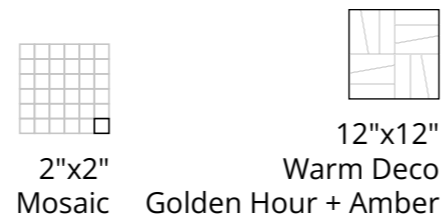
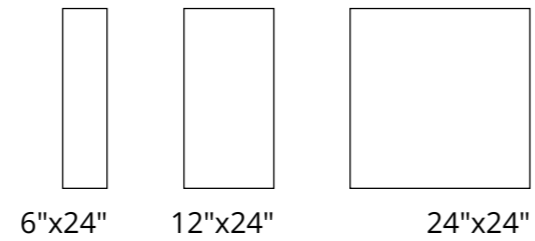
Amber



Crimson



Warm Deco



48"x110"

Cool

MATTE rectified

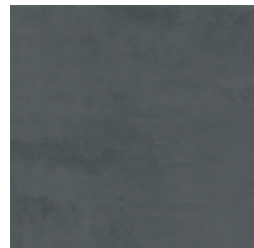


Blue Skies

MATTE rectified



Dawn



Dusk



Lavander Haze



Cool Deco



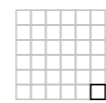
6"x24"



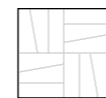
12"x24"



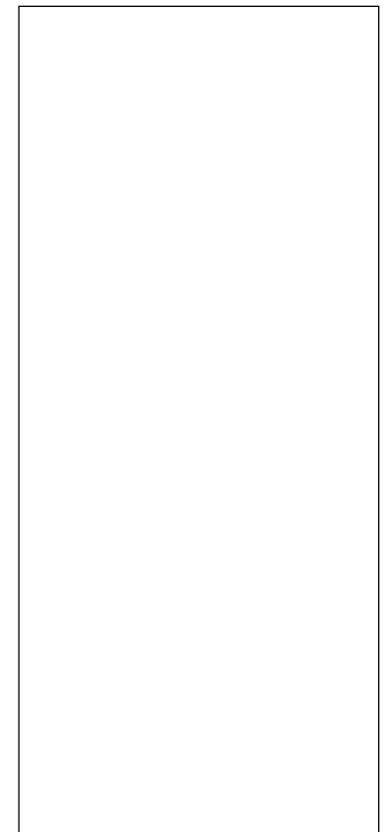
24"x24"



2"x2"
Mosaic



12"x12"
Cool Deco
Dawn + Dusk



48"x110"



Floor IN

Daydream Golden Hour / Dusk / Drizzle /
Lavender Haze 24"x24" Matte

Floor OUT

Daydream Drizzle 24"x24" 2CM Grip



Floor

Daydream Amber / Mist 24"x24" Matte



Floor

Daydream Mist / Drizzle / Amber 12"x24" Matte
Daydream Mist / Drizzle / Amber 6"x24" Matte
Daydream Drizzle 24"x24" Matte



Wall

Daydream Neutral Deco 12"x12" Matte

Floor

Daydream Fog 12"x24" Matte
Daydream Amber / Golden Hour 6"x24" Matte



Floor

Daydream Drizzle 24"x24" Matte

Daydream Dusk 6"x24" Matte

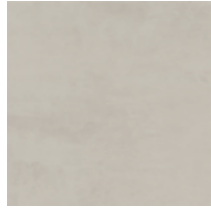


Wall

Daydream Sunrise Deco 48"x110" Matte

Floor

Daydream Amber 24"x24" Matte



Wall

Daydream Downpour Deco 48"x110" Matte

Floor

Daydream Drizzle 12"x24" Matte

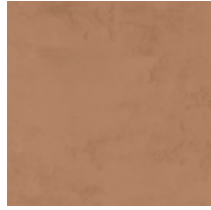


Wall

Daydream Blue Skies 48"x110" Matte

Floor

Daydream Drizzle 24"x24" 2CM Grip
Daydream Drizzle 12"x24" L-Shape Coping Grip

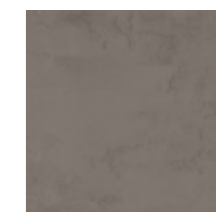


Wall

Daydream Sunrise Deco 48"x110" Matte

Floor

Daydream Storm / Crimson 12"x24" Matte



Wall

Daydream Blue Skies Deco 48"x110" Matte

Floor / Wall

Daydream Fog 24"x24" Matte



Wall

Daydream Blue Skies Deco 48"x110" Matte

Floor

Daydream Drizzle 24"x24" Matte





Wall

Daydream Neutral Deco 12"x12" Matte

Floor

Daydream Dusk 24"x24" Matte



Wall

Daydream Downpour Deco 48"x110" Matte

Floor

Daydream Dusk 24"x24" Matte

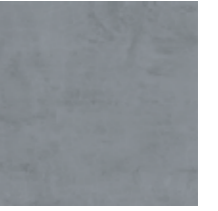


Wall
Daydream Cool Deco 12"x12" Matte

Floor
Daydream Mist 24"x24" Matte



Backsplash
Daydream Warm Deco 12"x12" Matte



Wall
Daydream Dawn 24"x24" Matte

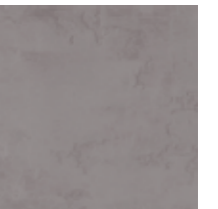


Wall

Daydream Lavender Haze 6"x24" Matte

Floor

Daydream Drizzle 24"x24" Matte



Floor / Wall
Wall Daydream Lavender Haze 2"x2" Mosaic Matte

Neutrals

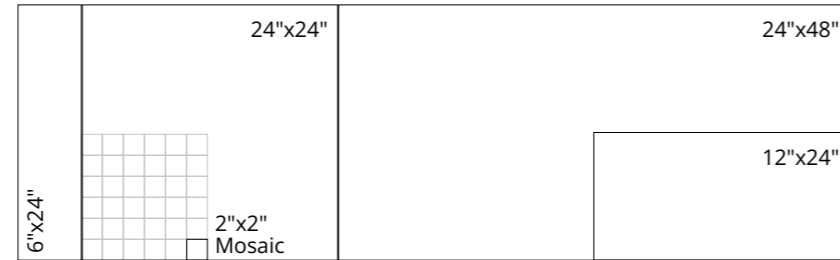
Mist

Sizes and finishes:

- 6"x24"
- 1106923 Matte rectified
- 12"x24"
- 1106895 Matte rectified
- 24"x24"
- 1106905 Matte rectified
- 24"x24" - 2CM Outdoor
- 1106908 Grip rectified
- 24"x48"
- 1106913 Matte rectified
- 24"x48" - 2CM Outdoor
- 1106910 Grip rectified
- 12"x12" (2"x2")
- 1106960 Matte rectified - Mosaic
- 6"x12"
- 1106950 Matte rectified - Cove Base
- 3"x12"
- 1106934 Matte rectified - Bullnose

Applications:

- Floor
- Wall
- Outdoor



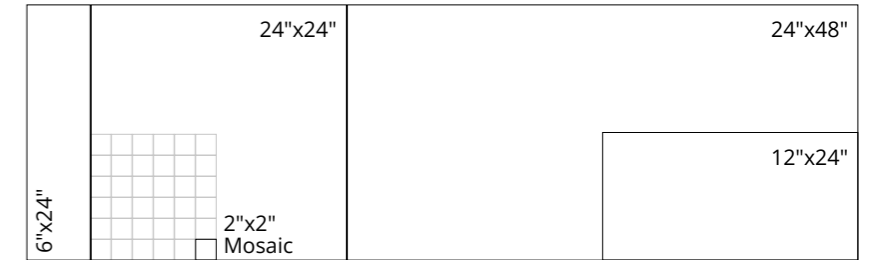
Drizzle

Sizes and finishes:

- 6"x24"
- 1106918 Matte rectified
- 12"x24"
- 1106890 Matte rectified
- 24"x24"
- 1106900 Matte rectified
- 24"x24" - 2CM Outdoor
- 1106907 Grip rectified
- 24"x48"
- 1106911 Matte rectified
- 24"x48" - 2CM Outdoor
- 1106909 Grip rectified
- 12"x12" (2"x2")
- 1106955 Matte rectified - Mosaic
- 6"x12"
- 1106945 Matte rectified - Cove Base
- 3"x12"
- 1106929 Matte rectified - Bullnose

Applications:

- Floor
- Wall
- Outdoor



Neutrals

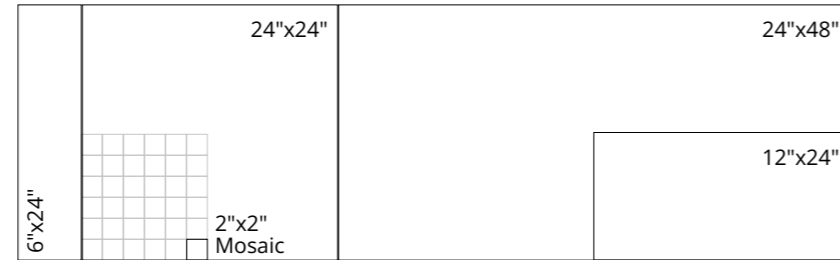
Fog

Sizes and finishes:

- 6"x24"
- 1106920 Matte rectified
- 12"x24"
- 1106892 Matte rectified
- 24"x24"
- 1106902 Matte rectified
- 24"x48"
- 1106912 Matte rectified
- 12"x12" (2"x2")
- 1106957 Matte rectified - Mosaic
- 6"x12"
- 1106947 Matte rectified - Cove Base
- 3"x12"
- 1106931 Matte rectified - Bullnose

Applications:

- Floor
- Wall



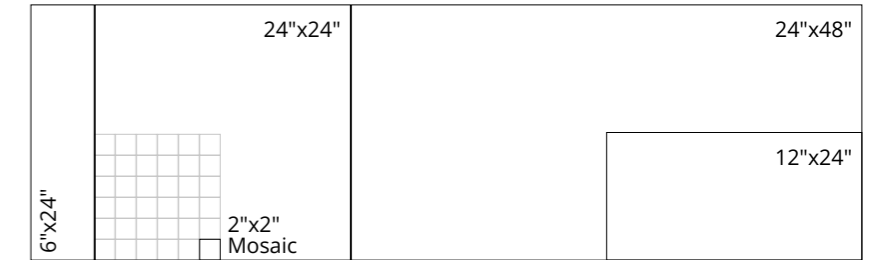
Storm

Sizes and finishes:

- 6"x24"
- 1106924 Matte rectified
- 12"x24"
- 1106896 Matte rectified
- 24"x24"
- 1106906 Matte rectified
- 24"x48"
- 1106914 Matte rectified
- 12"x12" (2"x2")
- 1106961 Matte rectified - Mosaic
- 6"x12"
- 1106951 Matte rectified - Cove Base
- 3"x12"
- 1106935 Matte rectified - Bullnose

Applications:

- Floor
- Wall



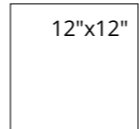
Neutral Deco

Sizes and finishes:

12"x12"
1106962 Matte rectified

Applications:

Floor
Wall



Downpour

Sizes and finishes:

48"x110"
1106940 Matte rectified

Applications:

Floor
Wall



48"x110"



Warm

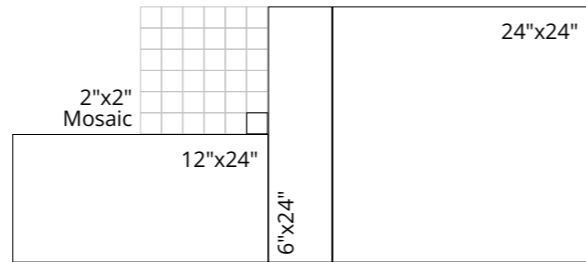
Sizes and finishes:

- 6"x24"
- 1106921 Matte rectified
- 12"x24"
- 1106893 Matte rectified
- 24"x24"
- 1106903 Matte rectified
- 12"x12" (2"x2")
- 1106958 Matte rectified - Mosaic
- 6"x12"
- 1106948 Matte rectified - Cove Base
- 3"x12"
- 1106932 Matte rectified - Bullnose

Applications:

- Floor
- Wall

Golden Hour



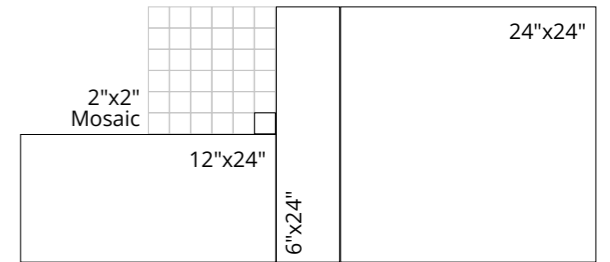
Sizes and finishes:

- 6"x24"
- 1106916 Matte rectified
- 12"x24"
- 1106888 Matte rectified
- 24"x24"
- 1106898 Matte rectified
- 12"x12" (2"x2")
- 1106953 Matte rectified - Mosaic
- 6"x12"
- 1106943 Matte rectified - Cove Base
- 3"x12"
- 1106927 Matte rectified - Bullnose

Applications:

- Floor
- Wall

Crimson



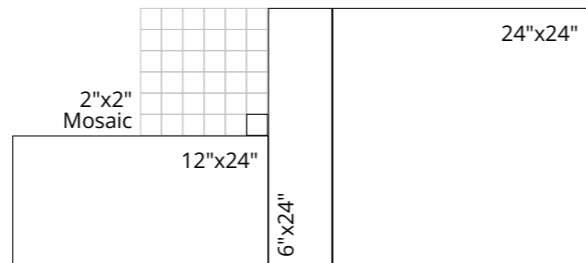
Amber

Sizes and finishes:

- 6"x24"
- 1106915 Matte rectified
- 12"x24"
- 1106887 Matte rectified
- 24"x24"
- 1106897 Matte rectified
- 12"x12" (2"x2")
- 1106952 Matte rectified - Mosaic
- 6"x12"
- 1106942 Matte rectified - Cove Base
- 3"x12"
- 1106926 Matte rectified - Bullnose

Applications:

- Floor
- Wall



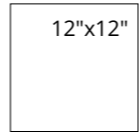
Warm Deco

Sizes and finishes:

12"x12"
1106963 Matte rectified

Applications:

Floor
Wall



Sunrise

Sizes and finishes:

48"x110"
1106941 Matte rectified

Applications:

Floor
Wall



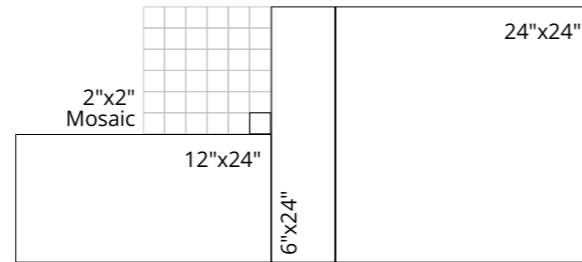
Cool

Sizes and finishes:

- 6"x24"
- 1106917 Matte rectified
- 12"x24"
- 1106889 Matte rectified
- 24"x24"
- 1106899 Matte rectified
- 12"x12" (2"x2")
- 1106954 Matte rectified - Mosaic
- 6"x12"
- 1106944 Matte rectified - Cove Base
- 3"x12"
- 1106928 Matte rectified - Bullnose

Applications:

- Floor
- Wall



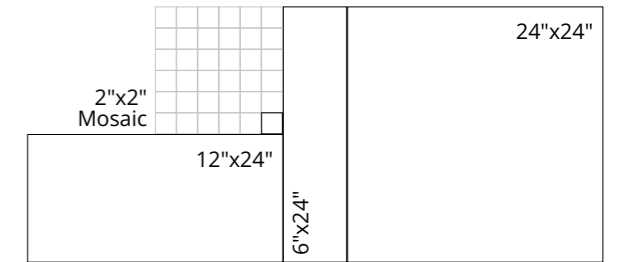
Dawn

Sizes and finishes:

- 6"x24"
- 1106922 Matte rectified
- 12"x24"
- 1106894 Matte rectified
- 24"x24"
- 1106904 Matte rectified
- 12"x12" (2"x2")
- 1106959 Matte rectified - Mosaic
- 6"x12"
- 1106949 Matte rectified - Cove Base
- 3"x12"
- 1106933 Matte rectified - Bullnose

Applications:

- Floor
- Wall



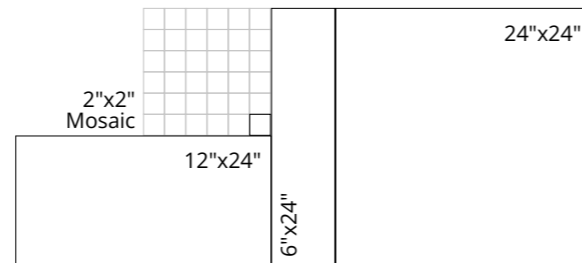
Lavender Haze

Sizes and finishes:

- 6"x24"
- 1106919 Matte rectified
- 12"x24"
- 1106891 Matte rectified
- 24"x24"
- 1106901 Matte rectified
- 12"x12" (2"x2")
- 1106956 Matte rectified - Mosaic
- 6"x12"
- 1106946 Matte rectified - Cove Base
- 3"x12"
- 1106930 Matte rectified - Bullnose

Applications:

- Floor
- Wall



Dusk

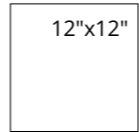
Cool Deco

Sizes and finishes:

12"x12"
1106964 Matte rectified

Applications:

Floor
Wall



Blue Skies

Sizes and finishes:

48"x110"
1106939 Matte rectified

Applications:

Floor
Wall



Technical Specifications

This product meets or exceeds all standards described in ANSI A137.1 & A137.3.
Este producto cumple o excede todos los estandares de ANSI A137.1 & A137.3.

| SPECS | TEST METHOD | INDUSTRY STANDARD | MILE*stone VALUES | |
|----------------------------|-------------|--|------------------------------|------------|
| WATER ABSORPTION | ASTM C373 | ≤0.5% | ≤0.5% | |
| SURFACE WEAR RESISTANCE | ANSI A137.1 | Surface Wear-resistance properties of glazed vitreous and porcelain tiles. | ALL RESIDENTIAL / COMMERCIAL | |
| CHEMICAL RESISTANCE | ASTM C650 | A tile sample is placed in continuous contact with a variety of chemicals for 24 hours. Sample must show no visible defects. | NOT AFFECTED | |
| D.C.O.F. AcuTest® | ANSI A326.3 | INDOOR ≥0.42 WET | ≥0.42 WET (MATTE SURFACES) | |
| | | OUTDOOR >0.55 WET | >0.55 WET (2CM & GRIP) | |
| STAIN RESISTANCE | ASTM C1378 | Surfaces are exposed to staining agents for 24 hours followed by four cleaning procedures. Results are recorded post cleaning. | NOT AFFECTED | |
| BREAKING STRENGTH | ASTM C1505 | ≥175 lbf | ≥200 lbf | |
| | ASTM C648 | ≥275 lbf | ≥300 lbf | |
| | ASTM 1505 | 2000 lbf (10.9 kN) | ≥2500 lbf | |
| RESISTANCE TO FREEZE | ASTM C1026 | A tile sample is subjected to repeated processes of freezing and thawing. Sample must show no visible defects. | RESISTANT | |
| WARPAGE EDGE | ASTM C485 | ±0.40% or ±0.05 in (±1.8 mm) | Compliant | Rectified |
| WARPAGE DIAGONAL | ASTM C485 | ±0.40% or ±0.07 in (±1.8 mm) | Compliant | Rectified |
| WEDGING | ASTM C502 | ±0.25% or ±0.03 in (±0.8 mm) | Compliant | Rectified |
| WARPAGE EDGE | ASTM C485 | ±0.50% or ±0.07 in (±1.8 mm) | Compliant | Calibrated |
| WARPAGE DIAGONAL | ASTM C485 | ±0.50% or ±0.07 in (±1.8 mm) | Compliant | Calibrated |
| WEDGING | ASTM C502 | ±0.50% or ±0.08 in (±2.0 mm) | Compliant | Calibrated |
| THICKNESS GAUGED PORCELAIN | ASTM C499 | Range: ± 0.02 in | ≤0.02 in | |
| | ASTM C499 | Range: ± 0.04 in | ≤0.04 in | |
| LENGTH / WIDTH VARIATION | ASTM C499 | ±0.25% or ±0.03 in (±0.8 mm) | ±0.25% | |

• Due to the inherent nature of fired porcelain tile, it is important to note that the coefficient of friction may vary within and between product runs.

Cleaning & Maintenance / Routine Care Instructions



Scan the QR code with your smartphone.



Green Certifications

| | | | |
|-----------------------------------|--|--|--|
| Human Health | Declare. <input checked="" type="checkbox"/> Declare Red List Free | HPD <input checked="" type="checkbox"/> HPD measured down to 100ppm | GREENGUARD <input checked="" type="checkbox"/> Greenguard Gold Certified (Inherently Non-Emitting) |
| Ecosystem Health | POST - Consumer Recycled Content <input checked="" type="checkbox"/> As much as 64% post-consumer recycled content. | GREEN SQUARED <input checked="" type="checkbox"/> Green Squared Certified | PFAS, PVC, VOC <input checked="" type="checkbox"/> Contains no PFAS, PVC, or VOCs |
| Climate Health | EPD <input checked="" type="checkbox"/> INTERNATIONAL EPD SYSTEM Third Party verified EPD GWP 6mm - 16.09 kg/m ² GWP 8mm - 22.8 kg/m ² GWP 2CM - 56.25 kg/m ² | <input checked="" type="checkbox"/> 100% of the raw material used in the body of our tile is regionally sourced, supporting sustainable practices and local industries. | |
| Social Health & Equity | Certified B Corporation <input checked="" type="checkbox"/> Certified B Corp (as of 2025) | BENEFIT CORPORATION <input checked="" type="checkbox"/> Registered Benefit Corporation in the state of TN (as of 2022) | bsi <input checked="" type="checkbox"/> ISO 9001 Certified ISO 14001 Certified |

Progress that invests in the entire society

As an active member of the U.S. Green Building Council, MILE[®]stone spreads awareness to the community and encourages the use of building solutions through environmentally friendly practices. Our products positively contribute to the requirements for obtaining the LEED (Leadership in Energy and Environmental Design) and WELL (IWBI) certifications.

A commitment to environmental sustainability and responsibility

We are committed to conscious development that minimizes the negative impact of manufacturing production on the environment. Our general approach to sustainability intersects with our business strategy to embrace three areas of responsibility: economic, social, and environmental. Some ways we prove this are:

- Products containing as much as 64% recycled content.
- Zero industrial wastewater discharge.
- A 99% internal process recycling rate.
- 100% regionally sourced raw materials used in the production of the body of our tile, supporting local industries and sustainable practices.

MILE[®]stone is taking these and other steps, as well as actively investing to reduce carbon emissions to ensure that we reach full carbon neutrality.



MADE IN THE USA



300 International Blvd. Clarksville, TN 37040 | www.milestonetiles.com | 1-877-356-7461

