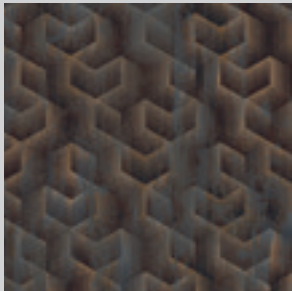
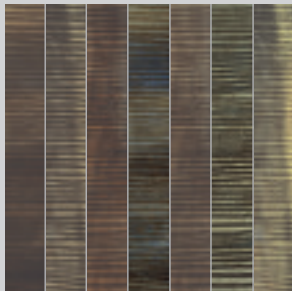
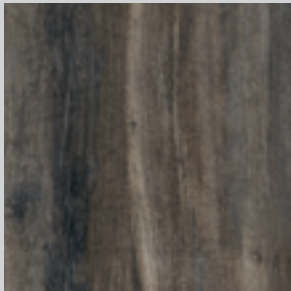
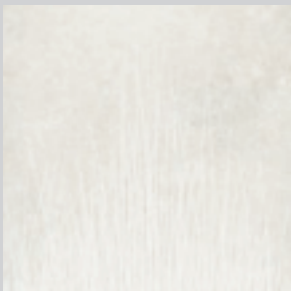
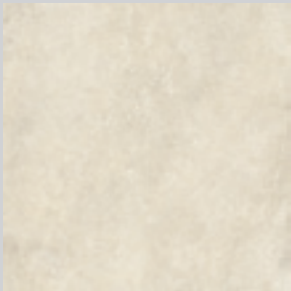




# Untamed™

capturing the wild spirit of a coastal paradise

**MI**  **E** *stone*  
Sustainable Tile, Made in the USA



# Untamed™

**“the marsh is so peaceful and yet it teems with life”**

The Untamed porcelain tile collection reflects the untouched beauty of one of our nation’s most stunning national seashores: Cumberland Island, an unspoiled land that offers a retreat from civilization, allowing for reconnection with nature and personal healing.

In 1964, recognizing the profound benefits of such wild places to the human spirit, Congress passed The Wilderness Act with near-unanimous support, ensuring the protection of some of America’s most pristine landscapes. With the motto “conservation is never an accident” as a guide, in 1972 Congress designated Cumberland Island a national seashore, protecting 9,800 acres. This preservation ensured wildlife habitats would remain untouched, giving generations to come the opportunity to experience the land in its unaltered state.

Cumberland Island’s wild horses, salt marshes, maritime forests, sand dunes, and diverse ecosystem have inspired the colors, textures, and patterns of the Untamed porcelain tile collection. The collection captures the island’s serenity and solitude, allowing you to create spaces that evoke the same sense of peace and celebrate the vibrant life found there. Embrace biophilic design by bringing a touch of Cumberland Island to your space with Untamed.



Organic



Pristine



Tranquil,  
Natural Beauty

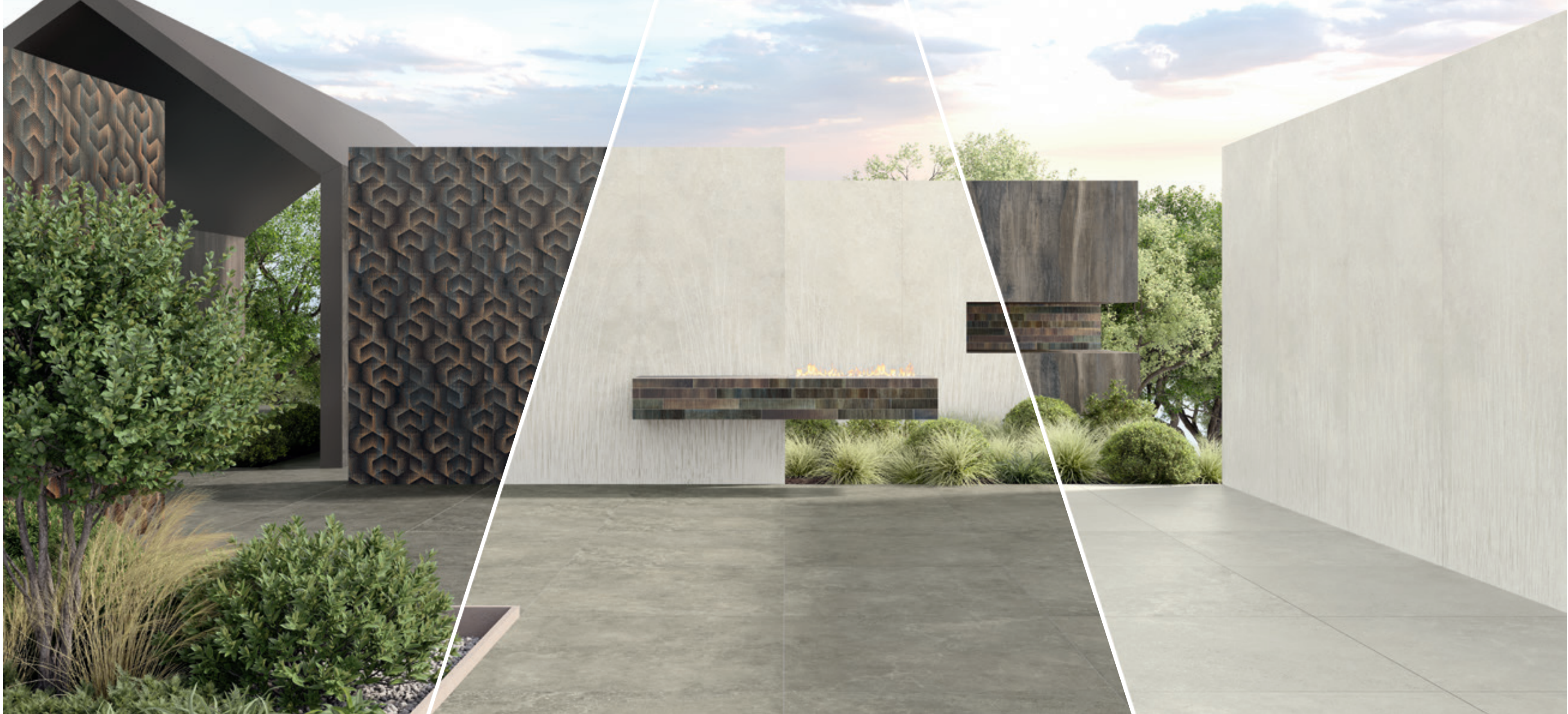




The Untamed™ collection draws inspiration from the rich biodiversity and stunning natural landscapes of Cumberland Island, where vibrant ecosystems thrive in harmony. Evoking a connection that speaks to both the eye and the soul, the collection reflects the essence of biophilic design: bringing the outdoors in. As a manufacturer committed to sustainability, eco-conscious practices are implemented in every step of the production process, ensuring the tiles in Untamed reflect not only the island's beauty but also a deep respect for the environment. By using 100% regionally sourced raw materials for the body of the tile and innovative production techniques, we strive to minimize our carbon footprint, helping to preserve the very ecosystems that inspire us. This commitment allows us to celebrate the natural world while contributing to a healthier planet for future generations.







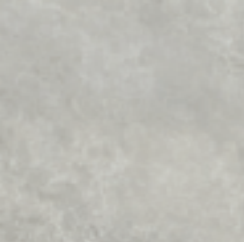


# Wander

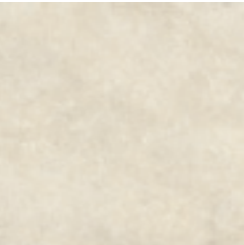
MATTE rectified



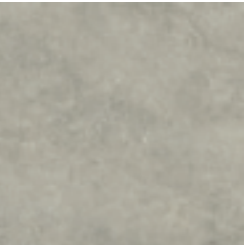
White



Cool



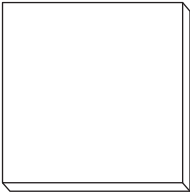
Warm



Sage



Ash



24"x24" 2CM Grip



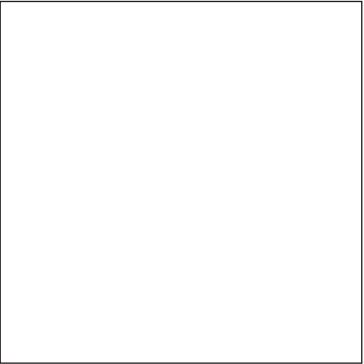
24"x48"



2"x2" Mosaic



12"x24"



48"x48"



# Flourish

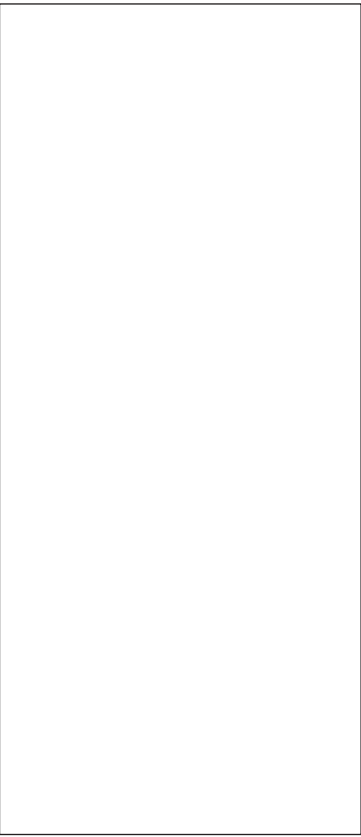
MATTE rectified



White



24"x48"



48"x110"



# Drift

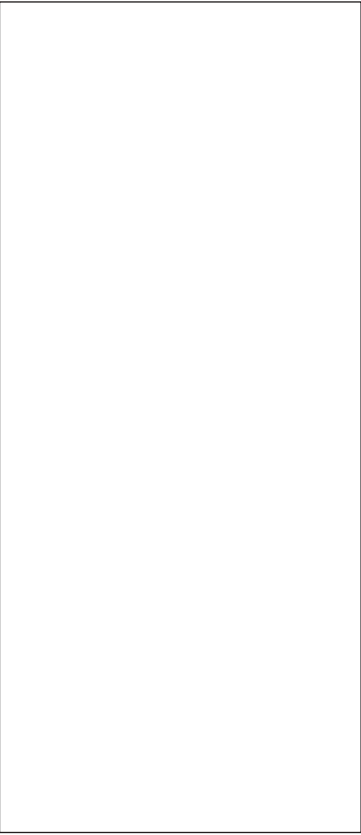
MATTE rectified



Drift Plank



24"x48"



48"x110"

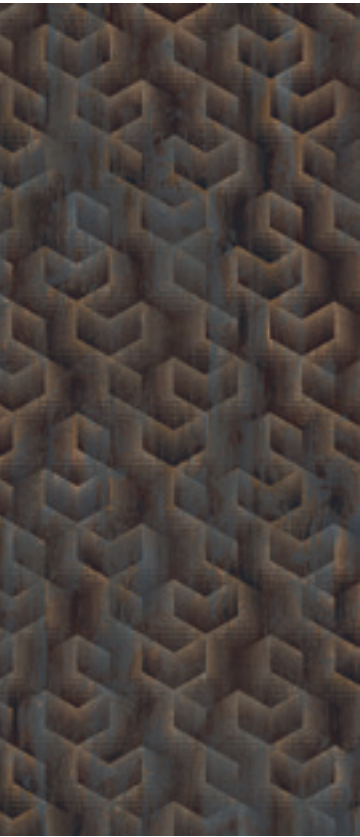


# Roam

MATTE rectified



Deco 01



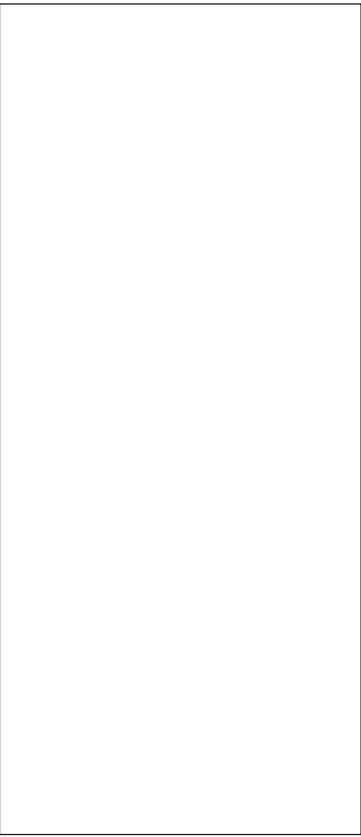
Deco 02



3"x24"  
Deco 01 only

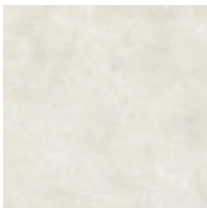
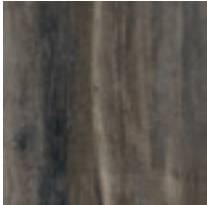


24"x48"  
Deco 02 only



48"x110"  
Deco 02 only





## Wall

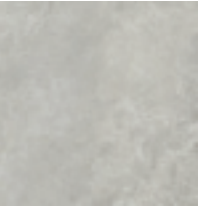
Untamed\_Drift Plank\_48"x110"\_Matte  
Untamed\_Flourish White\_48"x110"\_Matte

## Floor

Untamed\_Wander White\_2CM\_24"x24"\_Grip



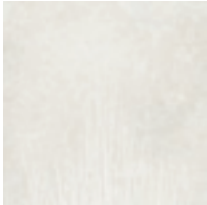




## Floor

Untamed\_Wander Cool\_24"x24"\_2CM\_Grip





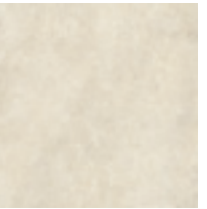
**Wall**

Untamed\_Flourish White\_48"x110"\_Matte  
Untamed\_Wander Sage\_24"x48"\_Matte

**Floor**

Untamed\_Wander Sage\_24"x24"\_2CM\_Grip





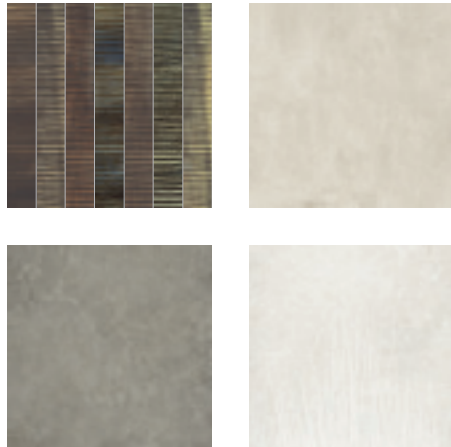
## Wall

Untamed\_Drift Plank\_48"x110"\_Matte

## Floor

Untamed\_Wander Warm\_24"x24"\_2CM\_Grip





## Wall

Untamed\_Roam Deco 01\_3"x24" \_Matte  
Untamed\_Flourish White\_48"x110" \_Matte

## Table

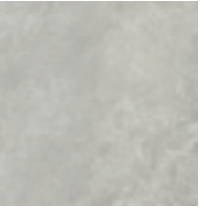
imprint\_Pre-Fab\_Intaglio Kaolin\_Matte

## Floor

Untamed\_Wander Ash\_24"x24" \_2CM\_Grip







### Top

Untamed\_Roam Deco 01\_3"x24"\_Matte

### Floor

Untamed\_Roam Deco 01\_3"x24"\_Matte

Untamed\_Wander Cool \_24"x48"\_Matte





## Wall

Untamed\_Deco 02\_48"x110"\_Matte

## Furniture

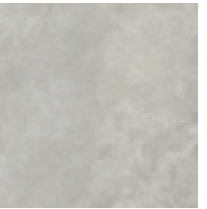
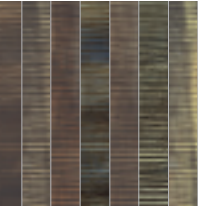
Untamed\_Wander Sage\_24"x48"\_Matte

## Floor

Untamed\_Wander Sage\_24"x48"\_Matte



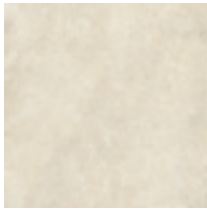
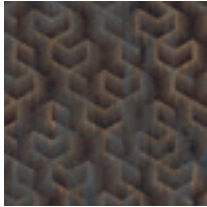




## Wall

Untamed\_Wander Cool\_Mosaic 2"x2"\_Matte  
Untamed\_Roam Deco 01\_3"x24"\_Matte





## Wall

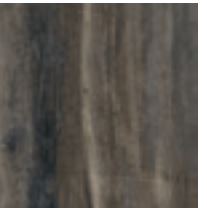
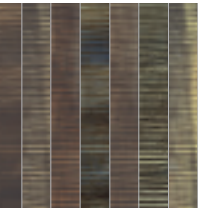
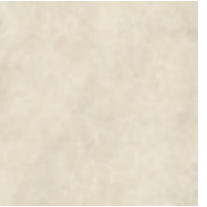
Untamed\_Roam Deco 02\_48"x110"\_Matte  
Untamed\_Wander Warm\_48"x48"\_Matte

## Floor

Untamed\_Wander Warm\_48"x48"\_Matte







### Wall In

Untamed\_Drift Plank\_48"x110"\_Matte

### Floor in

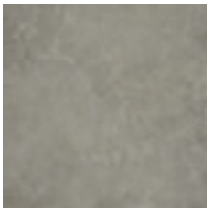
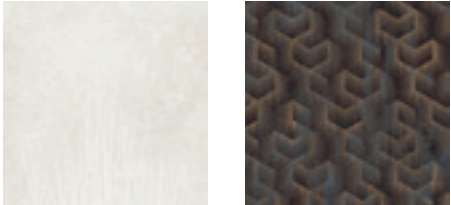
Untamed\_Wander Warm\_24"x48"\_Matte

Untamed\_Roam Deco 01\_3"x24"\_Matte

### Floor out

Untamed\_Wander Warm\_24"x24"\_2CM\_Grip





**Wall**

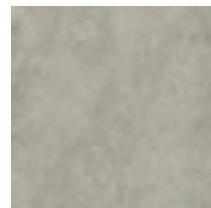
Untamed\_Roam\_Deco 02\_48"x110"\_Matte  
Untamed\_Flourish White\_48"x110"\_Matte

**Floor**

Untamed\_Wander Ash\_48"x48"\_Matte







## Wall

Untamed\_Roam Deco 02\_48"x110"\_Matte  
Untamed\_Wander Sage\_48"x48"\_Matte

## Floor

Untamed\_Wander Sage\_48"x48"\_Matte



# Wander

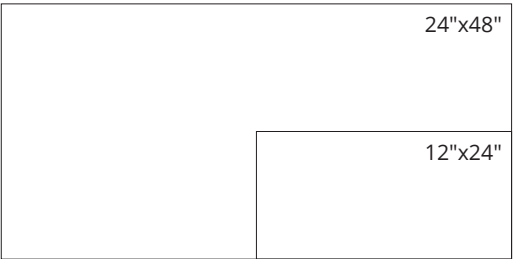
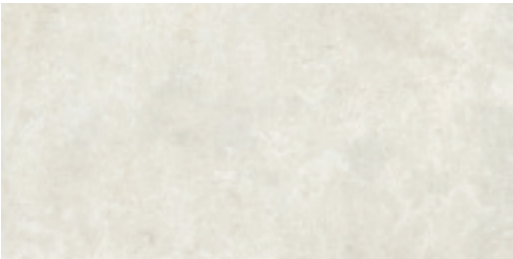
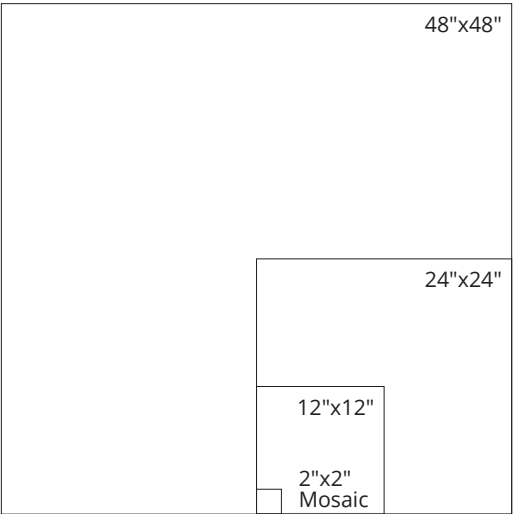
White

## Sizes and finishes:

- 12"x24"
- 1105985 Matte rectified
- 24"x48"
- 1105975 Matte rectified
- 48"x48"
- 1105980 Matte rectified
- 24"x24" - 2CM Outdoor
- 1105955 Grip rectified
- 12"x12" (36Dot)
- 1105991 Matte rectified - Mosaic
- 3"x12"
- 1105996 Matte rectified - Bullnose

## Applications:

- Floor
- Wall
- Outdoor



# Wander

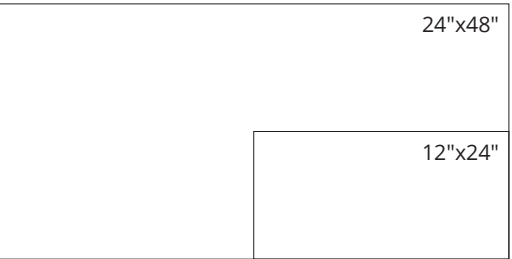
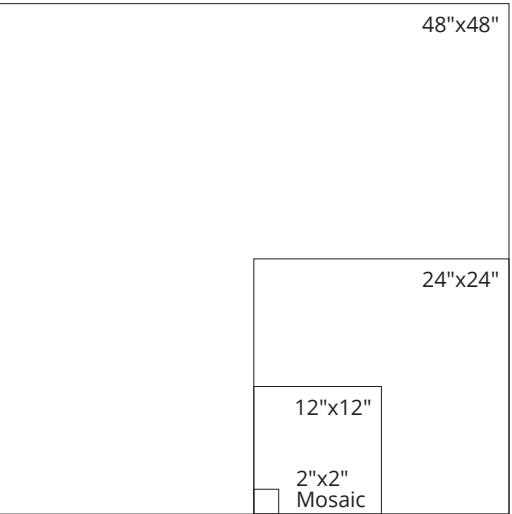
Ash

## Sizes and finishes:

- 12"x24"
- 1105990 Matte rectified
- 24"x48"
- 1105979 Matte rectified
- 48"x48"
- 1104984 Matte rectified
- 24"x24" - 2CM Outdoor
- 1105959 Grip rectified
- 12"x12" (36Dot)
- 1105995 Matte rectified - Mosaic
- 3"x12"
- 1106000 Matte rectified - Bullnose

## Applications:

- Floor
- Wall
- Outdoor



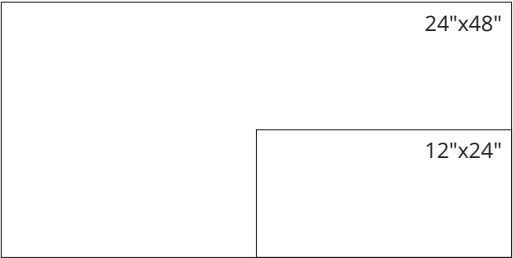
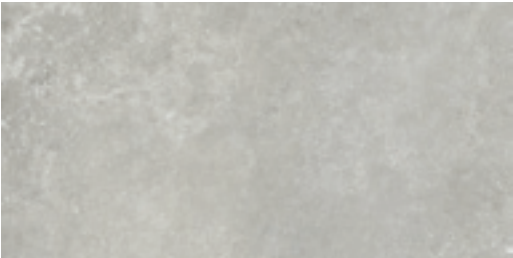
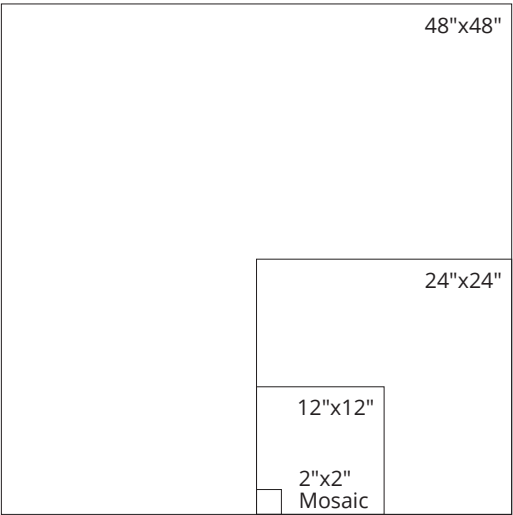
Cool

## Sizes and finishes:

- 12"x24"
- 1105986 Matte rectified
- 24"x48"
- 1105976 Matte rectified
- 48"x48"
- 1105981 Matte rectified
- 24"x24" - 2CM Outdoor
- 1105956 Grip rectified
- 12"x12" (36Dot)
- 1105992 Matte rectified - Mosaic
- 3"x12"
- 1105997 Matte rectified - Bullnose

## Applications:

- Floor
- Wall
- Outdoor



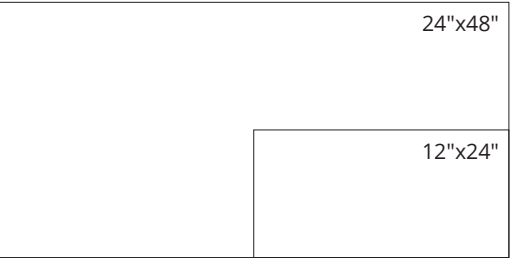
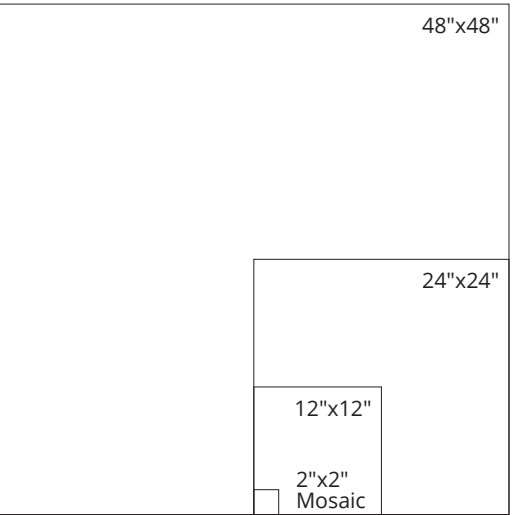
Sage

## Sizes and finishes:

- 12"x24"
- 1105989 Matte rectified
- 24"x48"
- 1105978 Matte rectified
- 48"x48"
- 1105983 Matte rectified
- 24"x24" - 2CM Outdoor
- 1105958 Grip rectified
- 12"x12" (36Dot)
- 1105994 Matte rectified - Mosaic
- 3"x12"
- 1105999 Matte rectified - Bullnose

## Applications:

- Floor
- Wall
- Outdoor





# Wander

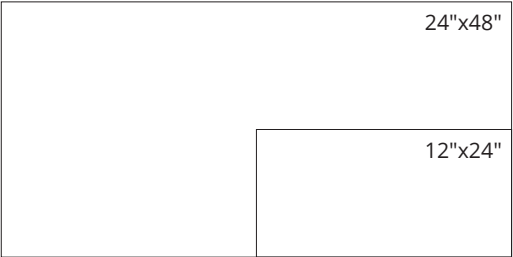
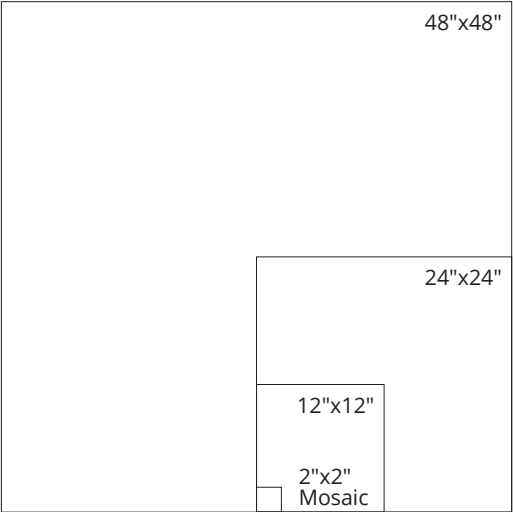
Warm

## Sizes and finishes:

- 12"x24"
- 1105988 Matte rectified
- 24"x48"
- 1105977 Matte rectified
- 48"x48"
- 1105982 Matte rectified
- 24"x24" - 2CM Outdoor
- 1105957 Grip rectified
- 12"x12" (36Dot)
- 1105993 Matte rectified - Mosaic
- 3"x12"
- 1105998 Matte rectified - Bullnose

## Applications:

- Floor
- Wall
- Outdoor



# Flourish

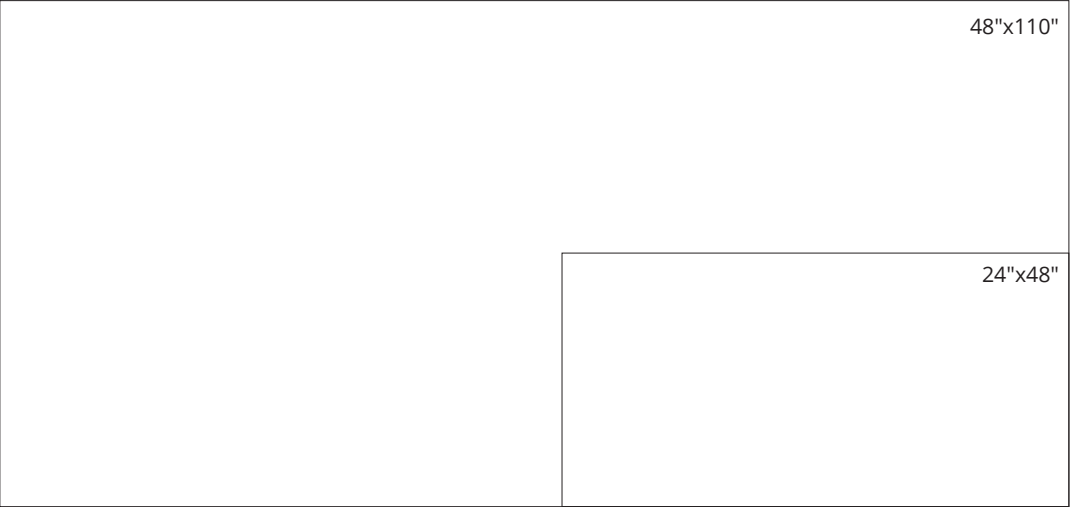
White

## Sizes and finishes:

- 48"x110"
- 1106082 Matte rectified
- 24"x48"
- 1106080 Matte rectified

## Applications:

- Floor
- Wall





Drift

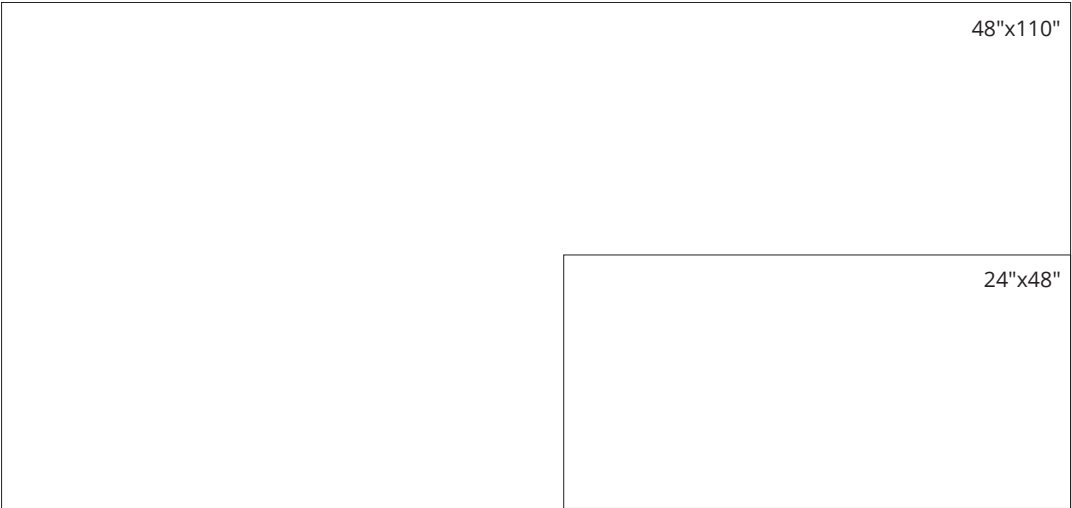
Drift Plank

Sizes and finishes:

- 48"x110"
- 1106083 Matte rectified
- 24"x48"
- 1106081 Matte rectified

Applications:

- Floor
- Wall



Roam

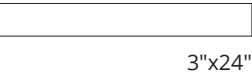
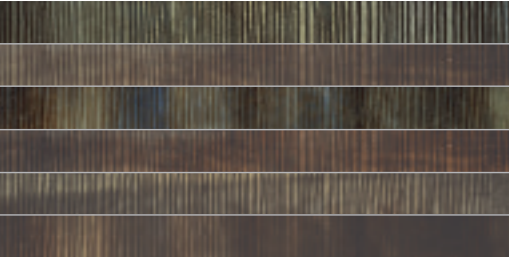
Deco 01

Sizes and finishes:

- 3"x24"
- 1106088 Matte rectified

Applications:

- Floor
- Wall



Roam

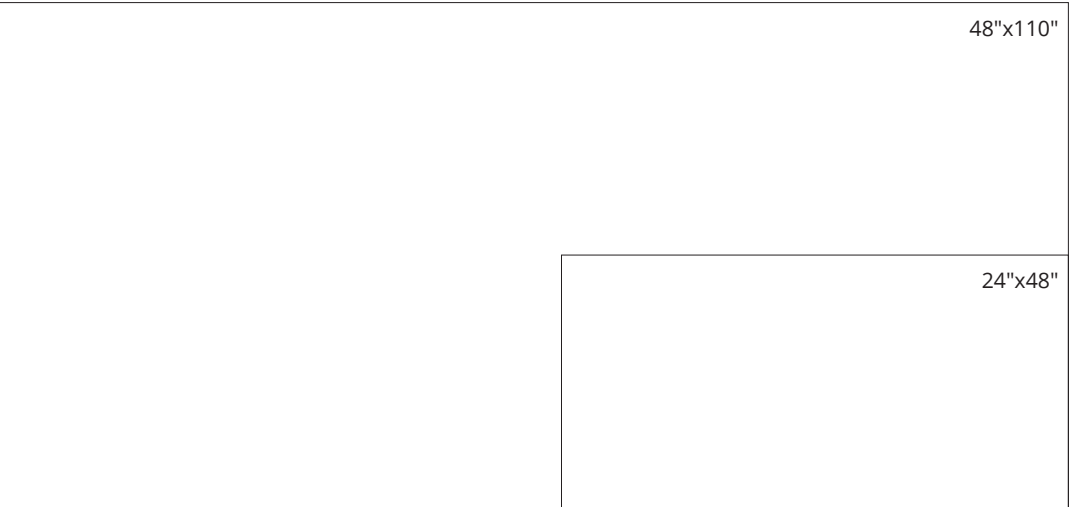
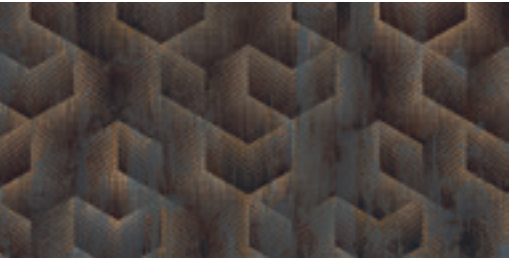
Deco 02

Sizes and finishes:

- 48"x110"
- 1106085 Matte rectified
- 24"x48"
- 1106084 Matte rectified

Applications:


- Floor
- Wall





Technical Specifications

This product meets or exceeds all standards described in ANSI A137.1.

	SPECS	TEST METHOD	INDUSTRY STANDARD	MILE®stone VALUES	
	WATER ABSORPTION	ASTM C373	≤0.5%	≤0.5%	
	SURFACE WEAR RESISTANCE	ANSI A137.1	Surface Wear-resistance properties of glazed vitreous and porcelain tiles.	ALL RESIDENTIAL / COMMERCIAL	
	CHEMICAL RESISTANCE	ASTM C650	A tile sample is placed in continuous contact with a variety of chemicals for 24 hours. Sample must show visible defects.	NOT AFFECTED	
	D.C.O.F. AcuTest®	ANSI A326.3	INDOOR ≥0.42 WET	≥0.42 WET	
			OUTDOOR ≥0.55 WET		
	STAIN RESISTANCE	ASTM C1378	Surfaces are exposed to staining agents for 24 hours followed by four cleaning procedures. Results are recordedpost cleaning.	NOT AFFECTED	
	BREAKING STRENGTH GAUGED PORCELAIN 6 MM	ASTM C1505	≥175 lbf	≥200 lbf	
	BREAKING STRENGTH	ASTM C648	≥275 lbf	≥300 lbf	
	BREAKING STRENGTH OUTDOOR 2CM	ASTM 1505	2000 lbf (10.9 kN)	≥2500 lbf	
	RESISTANCE TO FREEZE	ASTM C1026	A tile sample is subjected to repeated processes of freezing and thawing. Sample must show no visible defects.	RESISTANT	
	WARPAGE EDGE	ASTM C485	±0.40% or ±0.05 in ( ±1.8 mm)	± 0.40%	Rectified
	WARPAGE DIAGONAL	ASTM C485	±0.40% or ±0.07 in (±1.8 mm)	± 0.40%	Rectified
	WEDGING	ASTM C502	±0.25% or ±0.03 in (±0.8 mm)	± 0.25%	Rectified
	WARPAGE EDGE	ASTM C485	±0.50% or ±0.07 in (±1.8 mm)	± 0.50%	Calibrated
	WARPAGE DIAGONAL	ASTM C485	±0.50% or ±0.07 in (±1.8 mm)	± 0.50%	Calibrated
	WEDGING	ASTM C502	±0.50% or ±0.08 in (±2.0 mm)	± 0.50%	Calibrated
	THICKNESS GAUGED PORCELAIN	ASTM C499	Range: ± 0.02 in	≤0.02 in	
	THICKNESS	ASTM C499	Range: ± 0.04 in	≤0.04 in	
	LENGTH / WIDTH VARIATION	ASTM C499	±0.25% or ±0.03 in (±0.8 mm)	±0.25%	





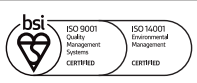
• Due to the inherent nature of fired porcelain tile, it is important to note that the coefficient of friction may vary within and between product runs.

Cleaning & Maintenance / Routine Care Instructions

Scan the QR code with your smartphone.



Green Certifications & Accreditations

DESCRIPTION	
	Declare labels disclose all intentionally added ingredients and residuals present in the final product. Being Red List Free means the worst materials, chemicals, and elements for human and environmental health are not present within our products.
	The Health Product Declaration Collaborative transparency declaration for all of Florim USA's naturally occurring materials.
	Certification of plant and product specific Environmental Product Declaration (EPD) which tracks environmental impacts from the production of porcelain tile.
	Tile Council of North America and the American National Standards Institute's standard for sustainability and environmental impact.
	Underwriter's Laboratories certification of low emitting materials. Florim USA is Green Guard Gold certified.
	Defines post-consumer content of as much as 3% recycled material which reduces landfill impact. Certified by Bureau Veritas.
	Defines pre-consumer content of as much as 45% recycled material which reduces our carbon footprint. Certified by Bureau Veritas.
	Florim USA's sustainability and social practices support the mission of The International Living Future Institute which strives to create a socially just, culturally rich, and ecologically restorative community.
	USGBC is committed to suit a more sustainable life. Florim USA supports this mission by manufacturing products which aid architects in achieving USGBC certification.
	Florim USA is proud to regionally source 100% of the raw materials used in the production of the body of our tile, supporting local industries and sustainable practices.
	Florim USA actively participates in the Tile Council of North America which allows us to be on the forefront of advances in the tile industry and its standards.
	The Tennessee Recycling Coalition is dedicated to promoting recycling and sustainable material management practices, and awarded Florim USA the Tennessee Recycler of the Year award for 2020.
	ISO 9001 & ISO 14001 are globally recognized standards. ISO 9001 certifies that Florim USA products and practices continually meet and exceed customer and regulatory requirements. ISO 14001 certifies that Florim USA complies with environmental regulations and that it's manufacturing practices are environmentally conscious.
	Florim USA updated its corporate charter in 2022 to become a Benefit Corporation. Our company is committed to maintaining this designation through initiatives focused on sustainability, social responsibility, ethical business practices and transparent, annual reporting on our social and environmental performance.

This product meets or exceeds all standards described in ANSI A137.1 & A137.3. / Este product cumple o exceed todos los estandares de ANSI A137.1 & A137.3. Our packaging is recyclable. Please visit earth911.com to find a recycling location near you.



# Progress that invests in the entire society

As an active member of the U.S Green Building Council, MILE®*stone* spreads awareness to the community and encourages the use of building solutions through environmentally friendly practices. Our products positively contribute to the requirements for obtaining the LEED (Leadership in Energy and Environmental Design) and WELL (IWBI) certifications.

## A commitment to environmental sustainability and responsibility

We are committed to conscious development that minimizes the negative impact of manufacturing production on the environment. Our general approach to sustainability intersects with our business strategy to embrace three areas of responsibility: economic, social, and environmental. Some ways we prove this are:

- Products containing as much as 45% recycled content.
- Post-consumer recycled content levels as much as 3%.
- Zero industrial wastewater discharge.
- A 99% internal process recycling rate.
- 100% regionally sourced raw materials used in the production of the body of our tile, supporting local industries and sustainable practices.

MILE®*stone* is taking these and other steps, as well as actively investing to reduce carbon emissions to ensure that we reach full carbon neutrality.





MADE IN THE USA



300 International Blvd. Clarksville, TN 37040 | [www.milestonetiles.com](http://www.milestonetiles.com) | 1-877-356-7461

